

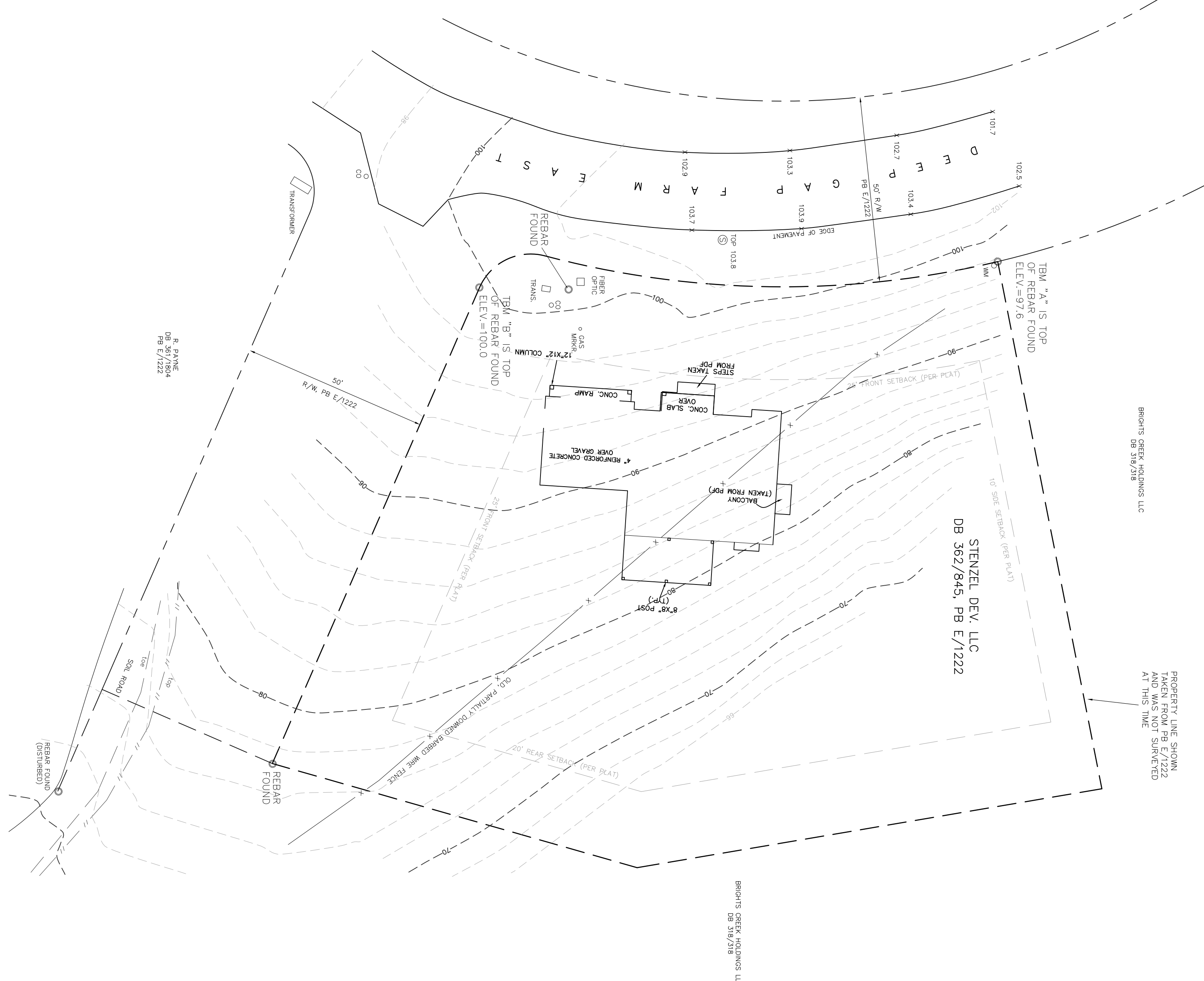
- NOTES:**
1. THIS PLAT MEETS THE REQUIREMENTS FOR A CLASS 'B' TOPOGRAPHIC SURVEY AS DEFINED IN THE "STANDARDS OF PRACTICE FOR LAND SURVEYING IN NORTH CAROLINA."
 2. VERTICAL DATUM IS ASSUMED.
 3. CONTOUR INTERVAL EVERY 2'.

LEGEND

	CURB INLET
	CMF - CONC. MON. FOUND
	GV - GAS VALVE
	IPF - IRON PIN FOUND
	LIGHT POLE
	SM - STORM MANHOLE
	SM - SEWER MANHOLE
	WM - WATER METER
	WV - WATER VALVE



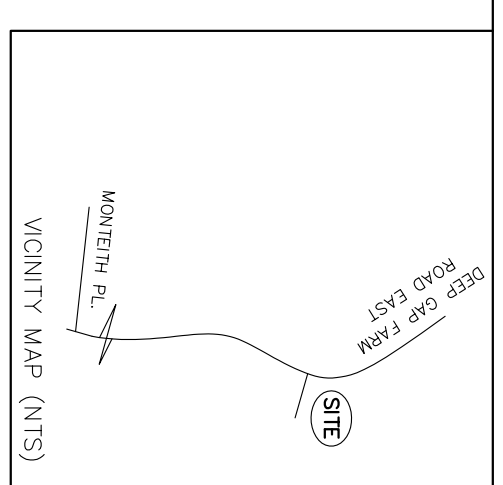
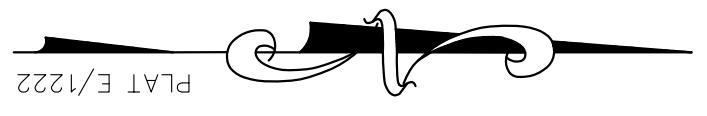
VAL\BRIGHTS CREEK\LOT 60 BC TOPODWG



BRIGHTS CREEK HOLDINGS LLC
DB 318/318

STENZEL DEV. LLC
DB 362/845, PB E/1222

PROPERTY LINE SHOWN
TAKEN FROM PB E/1222
AND WAS NOT SURVEYED
AT THIS TIME



TOPOGRAPHIC SURVEY OF
LOT 60, BRIGHTS CREEK
FOR
STENZEL DEV. LLC

COOPERS GAP TOWNSHIP
POLK COUNTY, N.C.
PIN: P29-83
SCALE 1"=20' 1/15/09

STEVEN P. LONG, P.L.S.
ED HOLMES & ASSOCIATES LAND SURVEYORS PA
P.O. BOX 17335 ASHEVILLE, NC 28816
(828)225-6562

